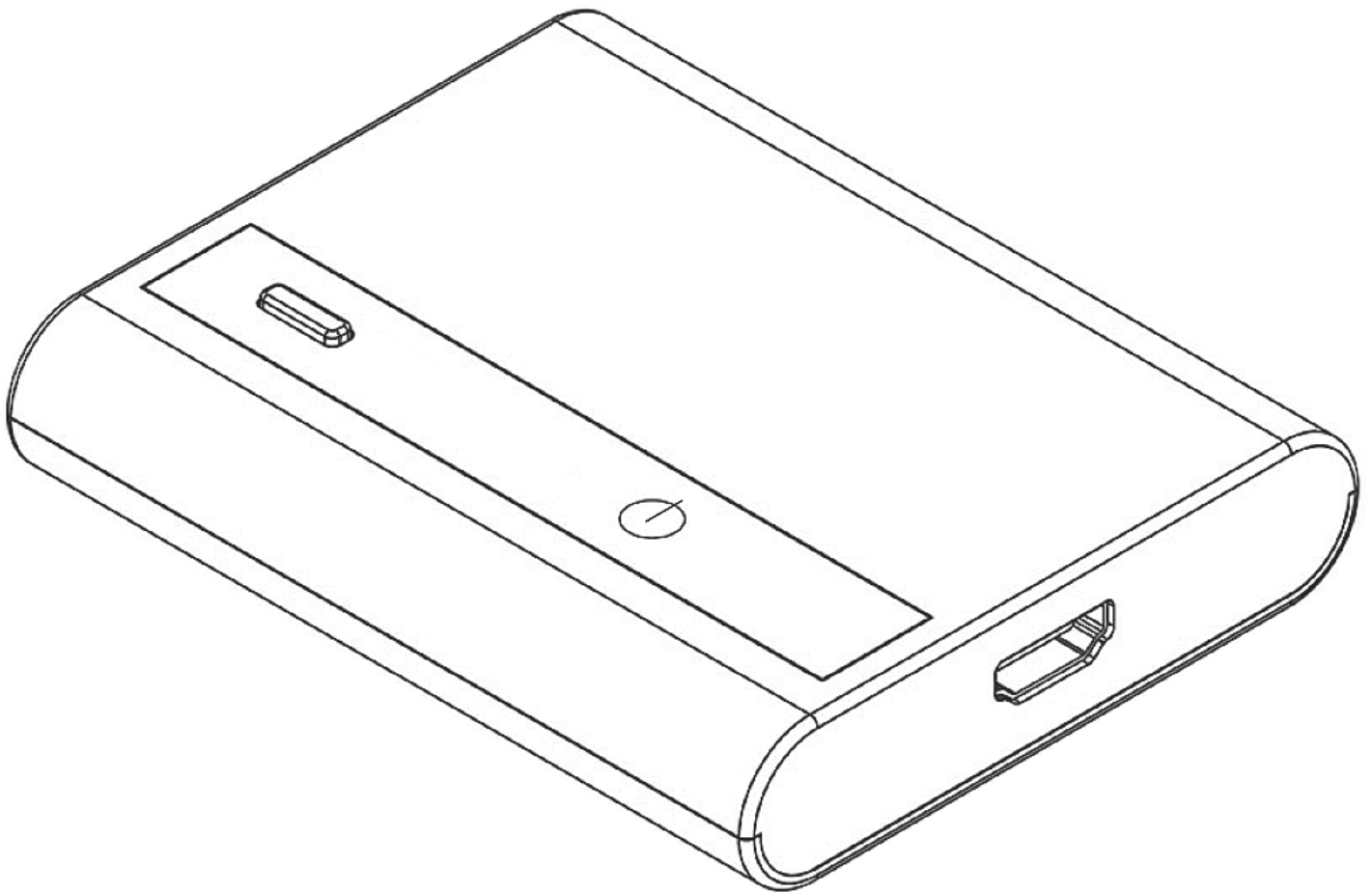


NEXXTECH™

1511217



USB to HDMI® Adapter

User's Manual

Table of Contents

Important Safety Instructions	2
Precautions	3
1. Introduction	4
Features	4
Package Contents	4
System Requirements	5
LED Status	5
2. Installation	6
Hardware Connection	6
Driver Installation	7-13
On Windows 7® (32/64 bit)	7-8
On Windows Vista®	9-10
On Windows XP®	11
On Mac (10.7)	12-13
3. Using the Adapter.	13
On Windows	13
Display Properties	13
Extend Your Windows Desktop to Secondary Monitor (Default)	14-16
Mirror Your Windows Desktop	17
Set as Primary Monitor	18
Configuring the Components	19-20
Fit to TV Function	21-22
Standby and Hibernate, Shut Down and Restart	23
Inferred Modes	23
Disconnecting the Adapter	24
Using Dual Adapters	24
On Mac	25
Managing Multiple Displays	25
Setting the Display Resolutions and Rotation	25
Setting the Position of Displays	25
Display Positions	26
Setting the Display to Mirror / Extend Mode	26
Changing the Main Display	27
Configuring the Display from the Menu Bar	27
Verifying the Driver Installation	28
Uninstall the Adapter and Driver	29
4. Troubleshooting	30
5. Specifications	31-32
7. FCC/Warranty	33

Important Safety Instructions



The lightning flash with arrowhead symbol, within an equilateral triangle is intended to alert the user to the presence of uninsulated “dangerous voltage” within the products enclosure that may be of sufficient magnitude to constitute a risk of electric shock to the persons.



The exclamation point within an equilateral triangle is intended to alert the user to the presence of important operating and maintenance (servicing) instructions in the literature accompanying the appliance.

Important Safety Instructions

- Read these instructions. All the safety and operating instructions should be read before this product is operated.
- Keep these instructions. The safety and operating instructions should be retained for future reference.
- Heed all warnings. All warnings on the appliance and in the operating instructions should be adhered to.
- Follow all instructions. All operating and use instructions should be followed.
- Do not use this apparatus near water. The appliance should not be used near water or moisture, for example, in a wet basement or near a swimming pool.
- Clean only with dry cloth.
- Do not block any ventilation openings. Install in accordance with the manufacturer's instructions.
- Do not install near any heat sources such as radiators, heat registers, stoves, or other apparatus (including amplifiers) that produce heat.
- Do not defeat the safety purpose of the polarized or grounding plug. A polarized plug has two blades with one wider than the other. A grounding plug has two blades and a third grounding prong. The wide blade or the third prong is provided for your safety. If the provided plug does not fit into your outlet, consult an electrician for replacement of the obsolete outlet.
- Protect the power cord from being walked on or pinched particularly at the plugs, convenience receptacles, and at the point where they exit from the apparatus.
- Only use attachments/accessories specified by the manufacturer.
- Use only with the cart, stand, tripod, bracket, or table specified by the manufacturer, or sold with the apparatus. When a cart or rack is used, use caution when moving the cart/apparatus combination to avoid injury from tip-over.
- Unplug the apparatus during lightning storms or when unused for long periods of time.
- Refer all servicing to qualified personnel. Servicing is required when the apparatus has been damaged in any way, such as power supply cord or plug is damaged, liquid has been spilled or objects have fallen into the apparatus has been exposed to rain or moisture, does not operate normally, or has been dropped.
- Please keep the unit in a well-ventilated environment.
- **WARNING:** To reduce the risk of fire or electric shock, do not expose this apparatus to rain or moisture. The apparatus shall not be exposed to dripping or splashing and that objects filled with liquids, such as vases, shall not be placed on the apparatus.
- **WARNING:** The main power plug is used as a disconnect device, the disconnect device shall remain readily operable.
- **WARNING:** To reduce the risk of electric shock, do not remove cover (or back) as there are no user- serviceable parts inside. Refer servicing to qualified personnel.
- **WARNING:** The batteries shall not be exposed to excessive heat such as sunshine, fire or the like.
- The apparatus should be connected to a power outlet with a protective grounding connection.



Precautions

Please read these precautions before operating the unit.

Placement

Avoid placing the unit in areas of:

- Direct sunlight or heating radiators, or closed automobiles.
- High temperature (over 35°C) or high humidity (over 90%).
- Dust as the internal parts may be seriously damaged.

Non-use periods

Turn the unit off when not in use. When left unused for a long period of time, the unit should be unplugged from the household AC outlet.

No fingers or other objects inside

- Touching internal parts of the unit is dangerous and may cause serious damage to the unit. Do not attempt to disassemble the unit.
- Do not put any foreign objects on the disc tray.

Keep away from water/magnet

- Keep the unit away from flower vases, tubs, sinks, etc. If liquids are spilled into the unit, serious damage could occur.
- Never bring a magnet or magnetized object near the unit.

Stacking

- Place the unit in a horizontal position, and do not place anything heavy on it.

Condensation

Moisture may form on the lens in the following conditions:

- Immediately after a heater has been turned on.
- In a steamy or very humid room.
- When the unit is suddenly moved from a cold environment to a warm one. If moisture forms inside the unit, it may not operate properly. In this case, turn on the power and wait about one hour for the moisture to evaporate.

If there is noise interference on the TV while a broadcast is being received

Depending on the reception condition of the TV, interference may appear on the TV monitor while you watch a TV broadcast and the unit is left on. This is not a malfunction of the unit or the TV. To watch a TV broadcast, turn off the unit.

1. Introduction

This USB to HDMI® Adapter enables you to connect more than one monitor, LCD or projector to a computer with a USB 2.0 port. For desktop users adding an extra monitor via USB connection is easier than ever without having to install an internal video card. Enjoy the benefits of an add-on monitor, such as more visible applications and a larger display area. The adapter supports hot-swapping and is energy-efficient.



Features

- Add-on monitor, LCD or projector through a single USB 2.0 port
- Hot-plug; add or remove monitor without system reboot
- Small in size, works with all HDMI® displays
- Supports high resolution up to 1920 x 1080
- Extend and Mirror mode support
- Resumes from hibernation and suspend modes
- Supports up to 6 USB display adapters simultaneously

Package Contents

Before installation, please check the items in the package. The package should contain the following items:

- USB to HDMI® Adapter x1
- CD (Driver and User's Manual) x1
- 1 m USB Cable x1
- Quick Installation Guide x1

System Requirements

The minimum requirements for the PC are:

- Single Core CPU 1.2GHz or higher. Intel Pentium/Celeron, AMD K6/Athlon™/Duron™, or compatible processor
- 512 MB memory
- At least one USB 2.0 port
- 30 MB of available disk space
- Windows® XP Home or Professional (including Table edition) SP2 or SP3, Windows Vista® SP1 or SP2 (32-bit or 64-bit), and Windows® 7 (32-bit or 64-bit).
- Supports all Intel-based Macs (including Snow Leopard 10.6.2, Leopard 10.5.8, Tiger 10.4.11).
- Super VGA (800 x 600) or higher resolution monitor

To play DVDs on the adapter-attached monitor, in addition to the requirements above, the following requirements should also be met:

- Dual core CPU 2.0 GHz processor

If the PC specification is below this, performance will be lower (or CPU loading higher than acceptable).

Windows® XP

For 1-2 monitors

This may not provide full frame rate DVD playback at full screen.

- 1.2 GHz Single Core CPU
- 512 MB memory

For 3 monitors (1 DVD video with other open applications)

Will support only 1 video of DVD resolution at full screen:

- 1.8 GHz CPU
- 1 GB memory

For 6 screens (1 DVD video):

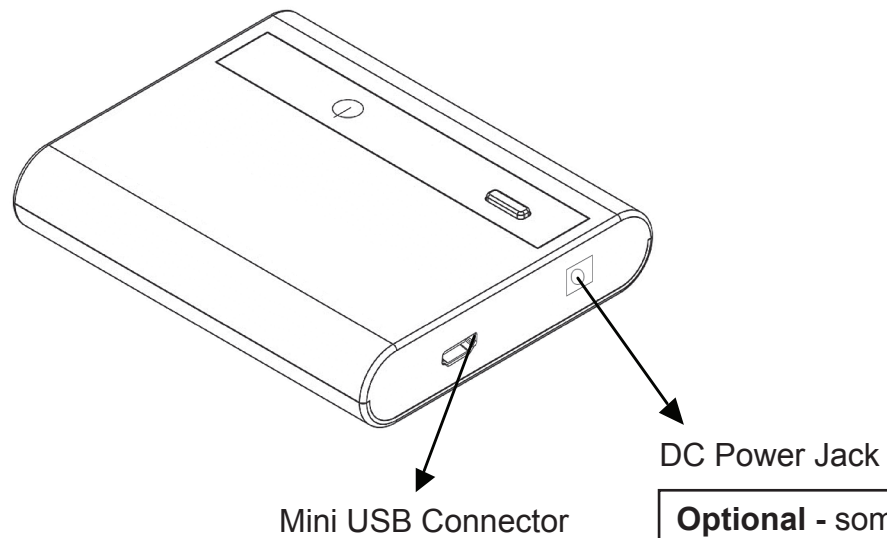
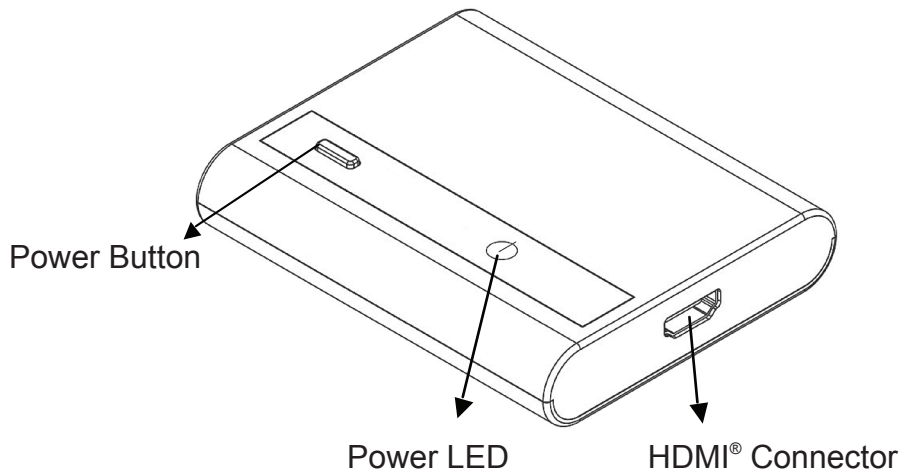
- 1.6 GHz Core Duo
- 1 GB memory

LED Status

LED	Colour	Description
Link	Green	On for power on Off for power off

2. Installation

Hardware Connection



Optional - some devices do not provide the standard power (0.5A) for USB 2.0 ports, and will require an external power supply.

Driver Installation

On Windows® 7 (32/64 bit)

Caution: DO NOT connect the USB to HDMI® Adapter to your computer before you install the provided driver.

Follow the procedures below to install the driver and then connect the adapter:

1. Insert the provided CD into your disc drive and installer program will run automatically. Please click on **Run Setup.exe** to execute the install program.

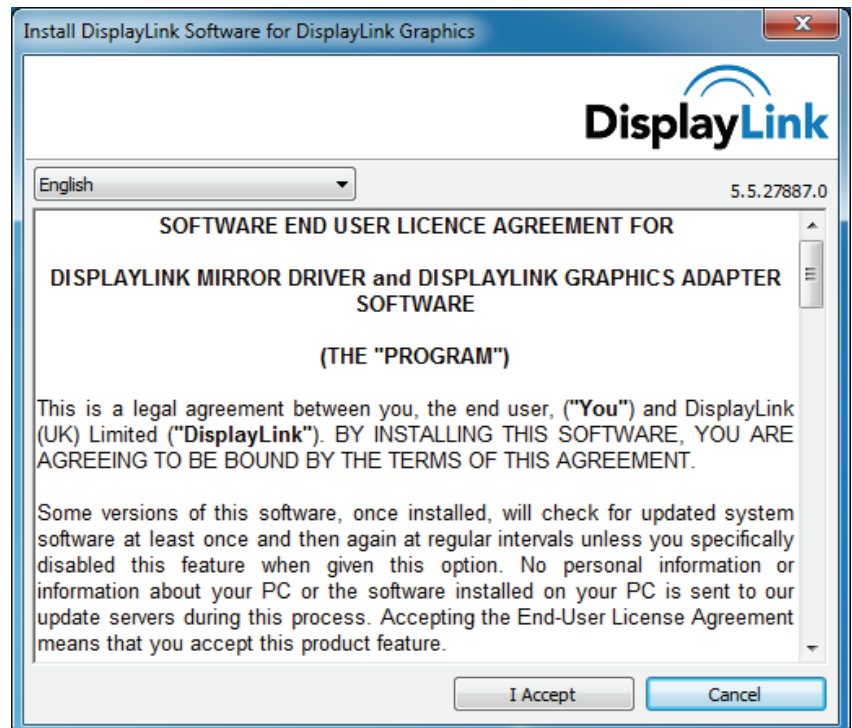
Note:

If the installer program doesn't run automatically, please locate and double-click on the **Setup.exe** file in the **Driver** folder to launch the setup program.

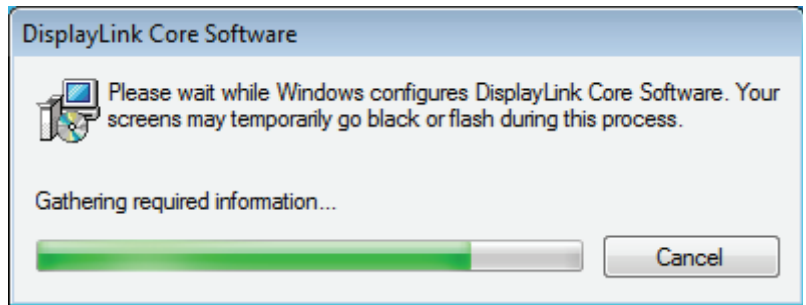
If you encounter a **User Account Control** dialog box when attempting to install a program, enter an administrator password or click **Yes** to start the installation.



2. When you see the **License Agreement** screen prompted as below, click on **I Accept** to install the software for USB display adapter.

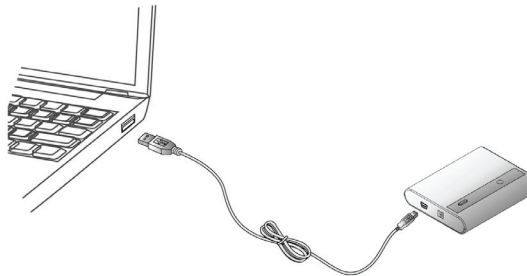


3. Please wait while Windows configures DisplayLink Core Software. Your screens may temporarily go black or flash during this process.

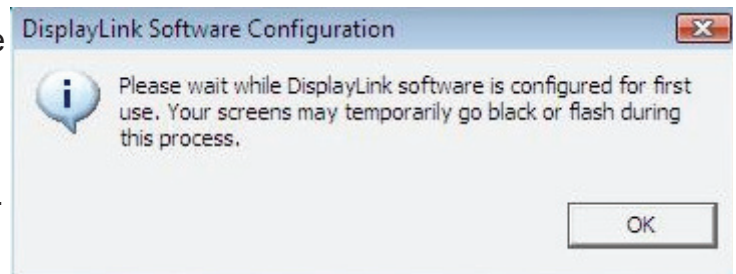


4. When finished, the installation screen will disappear and you will return to your desktop.

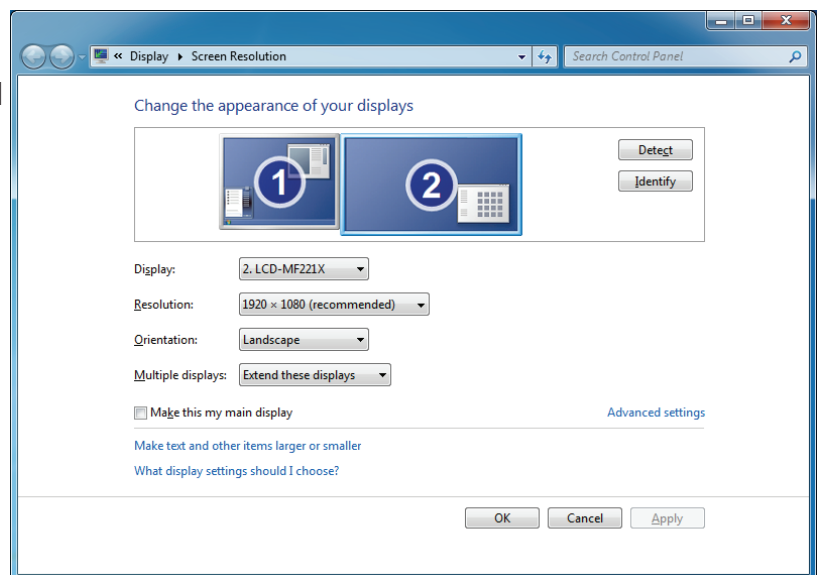
5. **Connect** the USB to HDMI® Adapter to your computer and monitor.



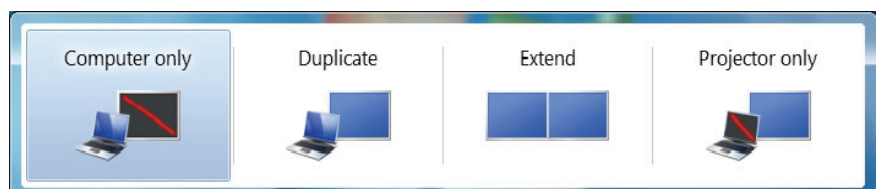
6. When you press the power button on device, the following window will appear. Please wait while DisplayLink software is configured for first use. Your screens may temporarily go black or flash during this process. Please click “**OK**” to start to use USB to HDMI® Adapter.



7. You can change the appearance of your displays with the Windows key. Additional controls are available in Windows® 7: Orientation (portrait, landscape, rotated portrait, and rotated landscape).



8. To control the behaviour of an attached DisplayLink device (or screen), it is possible to use **Windows Key+P** to display a menu (and cycle through it) to allow:
Disconnect Projector, Duplicate, Extend, Projector Only.



**Actual strings depend on your operation system. These screen shots are from Windows® 7 and might vary slightly for each operation system.*

On Windows Vista® (32/64 bit)

Caution: DO NOT connect the USB to HDMI® Adapter to your computer before you install the provided driver.

Follow the procedures below to install the driver and then connect the adapter:

1. Insert the provided CD into your disc drive and installer program will run automatically. Please click on Run **Setup.exe** to execute the install program.

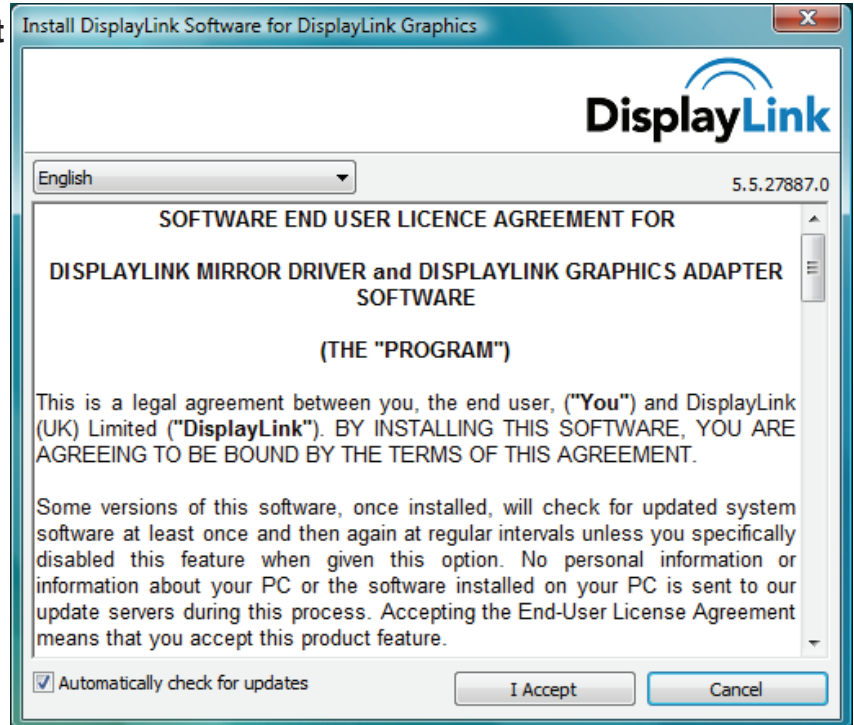
Note:

If the installer program doesn't run automatically, please locate and double-click on the **Setup.exe** file in the **Driver** folder to launch the setup program.

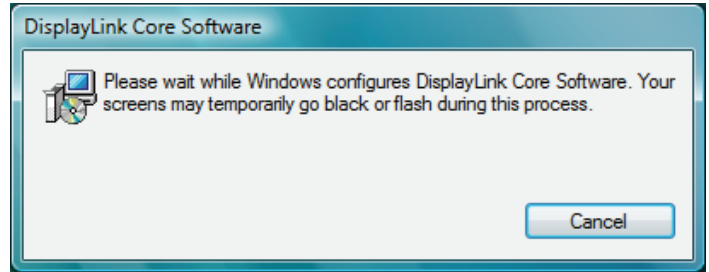
If you encounter a **User Account Control** dialog box when attempting to install a program, enter an administrator password or click **Allow** to start the installation.



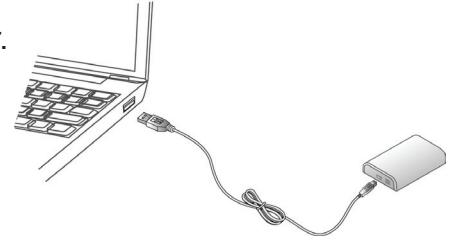
2. When you see the **License Agreement** screen prompted as below, click on **I Accept** to install the software for USB display adapter.



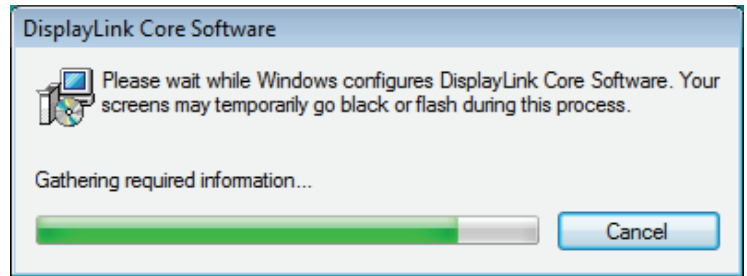
3. Please wait while Windows configures DisplayLink Core Software.
Your screens may temporarily go black or flash during this process.



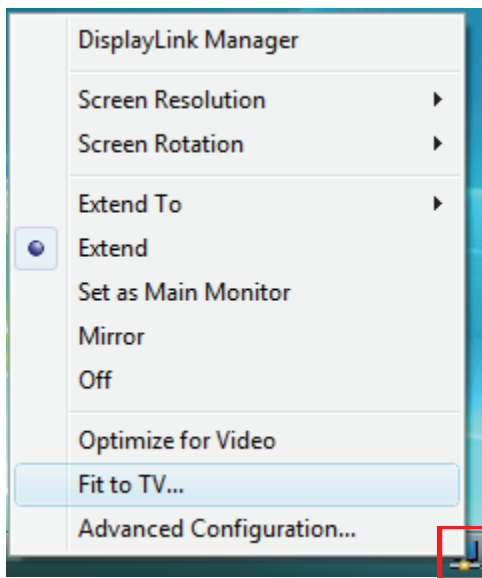
4. When finished, the installation screen will disappear and you will return to your desktop.
5. **Connect** the USB to HDMI® Adapter to your computer and monitor.



6. When you press the power button on device, the following window will appear. Please wait while DisplayLink software is configured for first use. Your screens may temporarily go black or flash during this process. Please click “OK” to start to use USB to HDMI® Adapter.
Notice: If prompting to restart your computer, click Yes to restart or No to manually restart later.



7. You will see the DisplayLink Manager Icon in system tray that looks like a monitor as below. Click on the icon to bring up the menu.



- **Extend Mode:** The screen is part of the extended desktop.
- **Mirror Mode:** The screen copies the contents of the primary screen.
- **Off Mode:** The screen is black.
- **Set as Main Monitor:** The screen is the primary screen.

**Actual strings depend on your operation system. These screen shots are from Windows® 7 and might vary slightly for each operation system.*

On Windows XP®

Caution: DO NOT connect the USB to HDMI® Adapter to your computer before you install the provided driver.

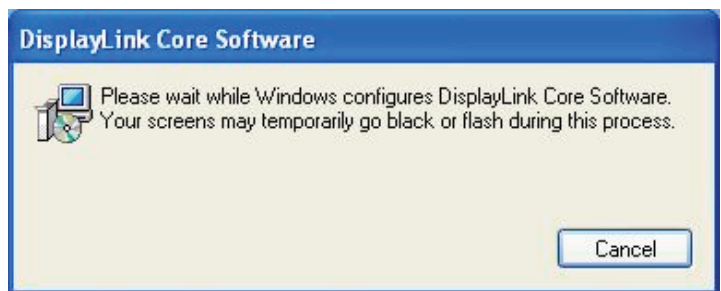
Follow the procedures below to install the driver and then connect the adapter:

1. Insert the provided CD into your disc drive. You may see the **License Agreement** screen prompted as below. Please click on **I Accept** to start the Driver installation.

Note:

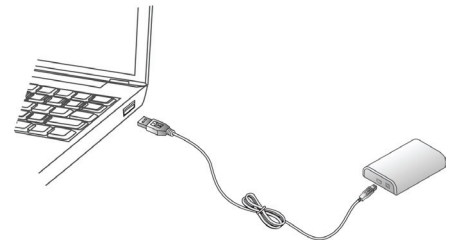
If the installer program doesn't run automatically, please locate and double-click on the **Autorun.exe** file in the **CD** to launch the install program.

2. Please wait while Windows configures **DisplayLink Core Software**. Your screens may temporarily go black or flash during this process.

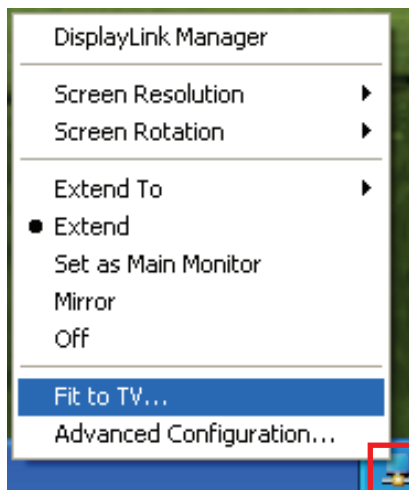


**Actual strings depend on your operation system. These screen shots are from Windows® XP and might vary slightly for each operation system.*

3. You must restart your computer before the new setting will take effect.
4. When finished, the installation screen will disappear and you will return to your desktop.
5. **Connect** the USB to HDMI® Adapter to your computer and monitor.



6. Press the Power button on device, you will see the DisplayLink Manager Icon in system tray. Click on the icon to bring up the menu.



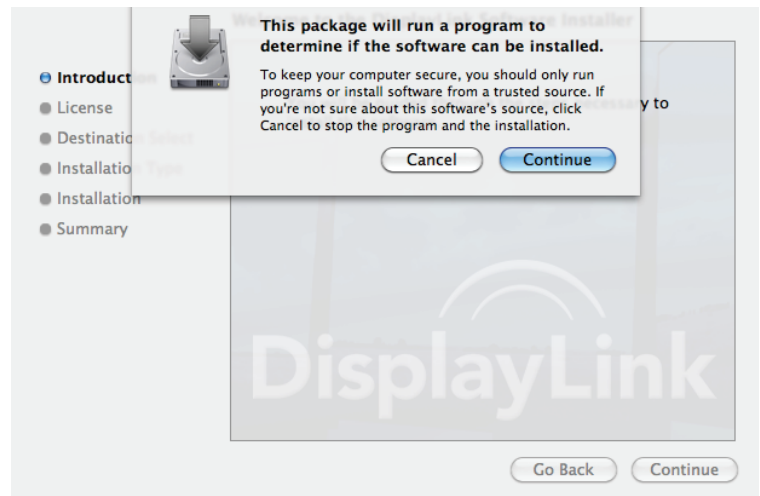
- **Extend Mode:** The screen is part of the extended desktop.
- **Mirror Mode:** The screen copies the contents of the primary screen.
- **Off Mode:** The screen is black.
- **Set as Main Monitor:** The screen is the primary screen.

On Mac (10.7)

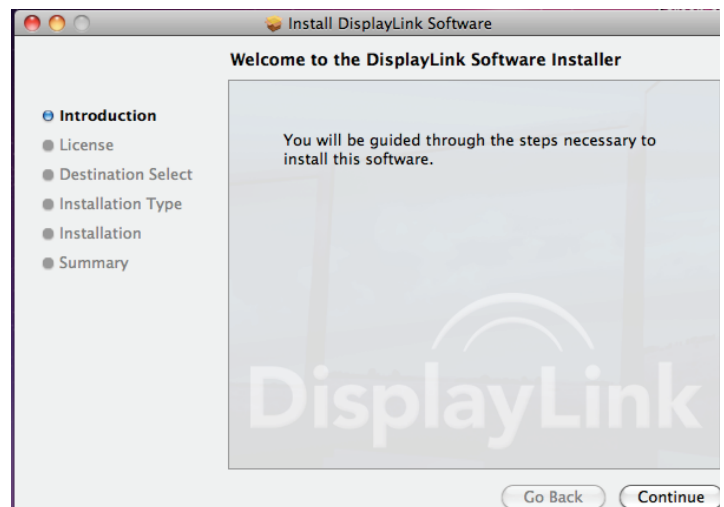
Caution: DO NOT connect the USB to HDMI® Adapter to your computer before you install the provided driver.

Follow the procedures below to install the driver and then connect the adapter:

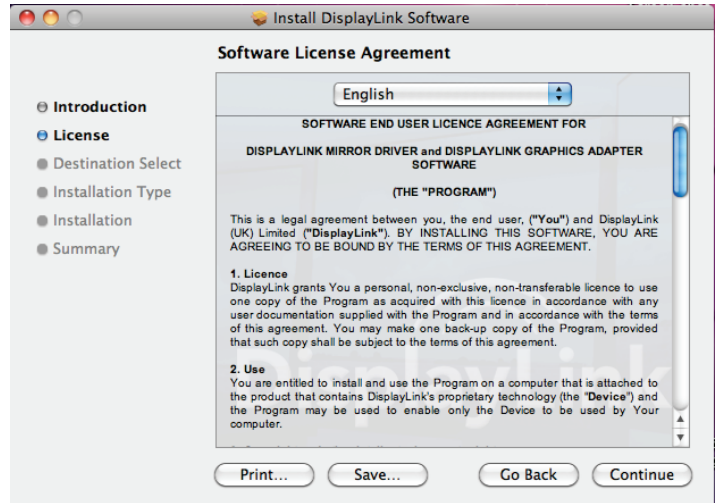
1. Insert the provided CD into your disc drive. Locate and double-click the **Driver folder > Mac folder > DisplayLink Installer 1.8.dmg** to launch the setup program.
2. Select “DisplayLink Software Installer” to begin installing the DisplayLink Driver on your Mac.
3. When the following Window appears, please click **Continue** to install the driver.



4. Click **Continue** to install this software.



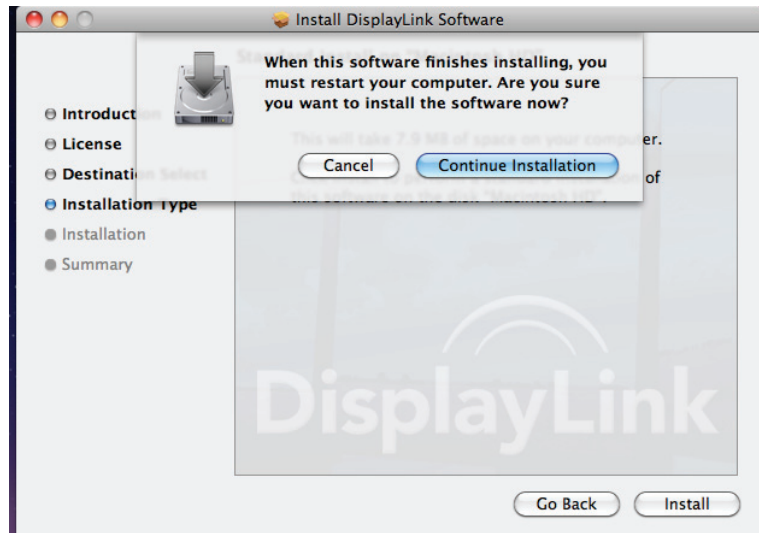
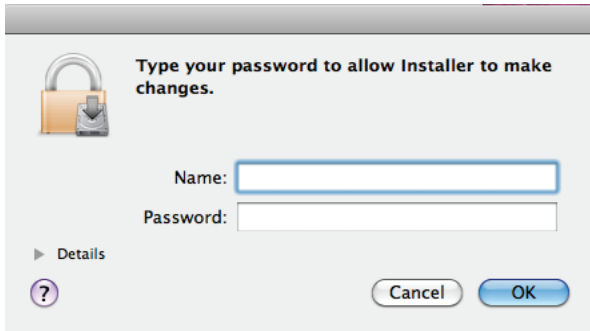
5. Please click **Continue** reading **Software License Agreement**.



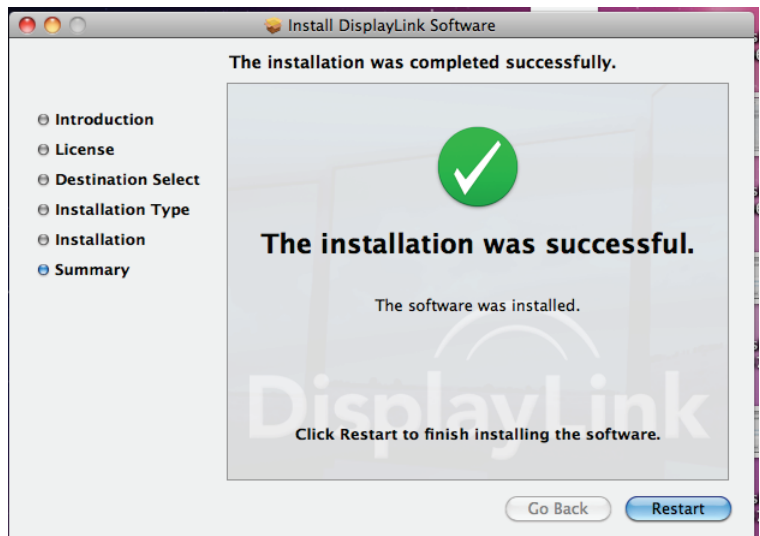
6. Click **Agree** to continue the installation and quit the installer.

7. Click **Install** to perform a standard installation of this software on the disk **“Macintosh HD”**.

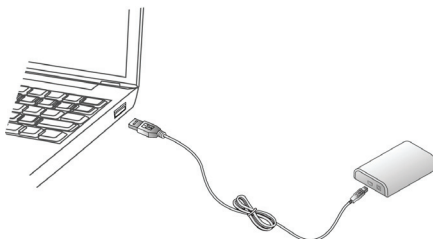
8. Type your password to allow Installer to make changes. Click **Continue Installation** to install.



9. The installation was successful, please click **Restart** to finish installing the software.



10. **Connect** the USB to HDMI® Adapter to your computer and monitor.



3. Using the Adapter

On Windows

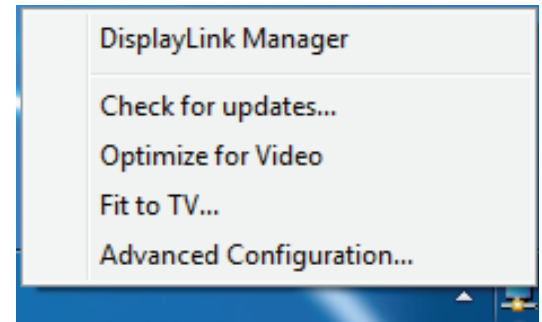
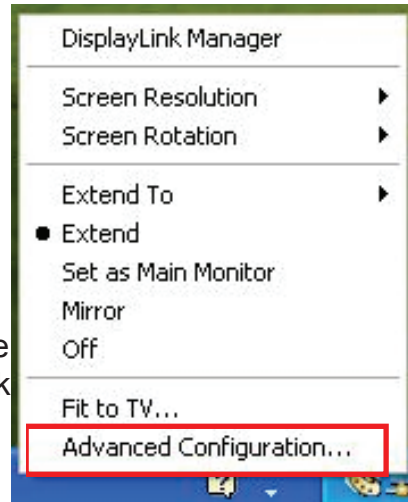
Display Properties

Display Properties allows you to configure the display mode, screen resolution, and physical arrangement of your monitors.

Quick Set-up

Click on the **DisplayLink Device** icon and select **Advanced** to configure the **Display Properties** as shown or Manual Set Up as described below.

On Windows® 7, the **DisplayLink Device** icon will be hidden. Please click the **arrow sign** and right click the **DisplayLink Device** icon to select **Advanced**.



Manual Set-up

Position the mouse anywhere on your computer desktop, right-click and select **Screen Resolution** on Windows® 7, **Personalize > Display Settings** on Vista® or **Properties > Settings** on Windows® XP.

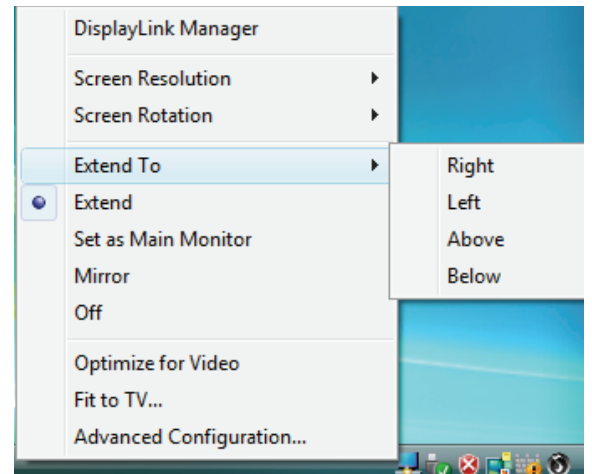
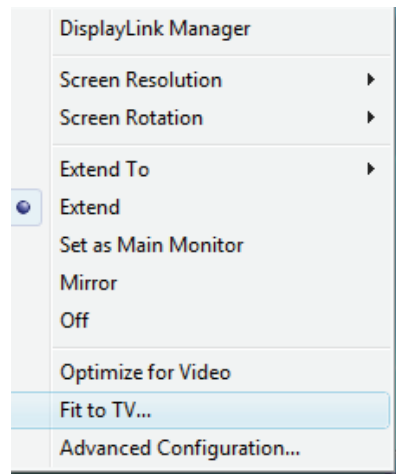
Extend Your Windows Desktop to a Secondary Monitor (Default)

In the extended mode, your display will be spread over the secondary monitor(s). This mode allows you to perform multiple tasks more effectively without overlapping windows.

Quick Set-up

Click on the **DisplayLink Device** icon and select **Extend to Right; Left; Above; Below** to configure the setting as above.

Note: The full DisplayLink User Interface as above is not supported on Windows® 7. Displays Configuration on Windows® 7 should be carried out using the improved



Windows Display Properties dialog box (Figure1), and using the Windows-P key combination (Figure 2).

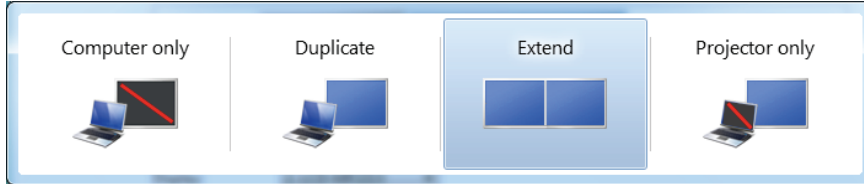
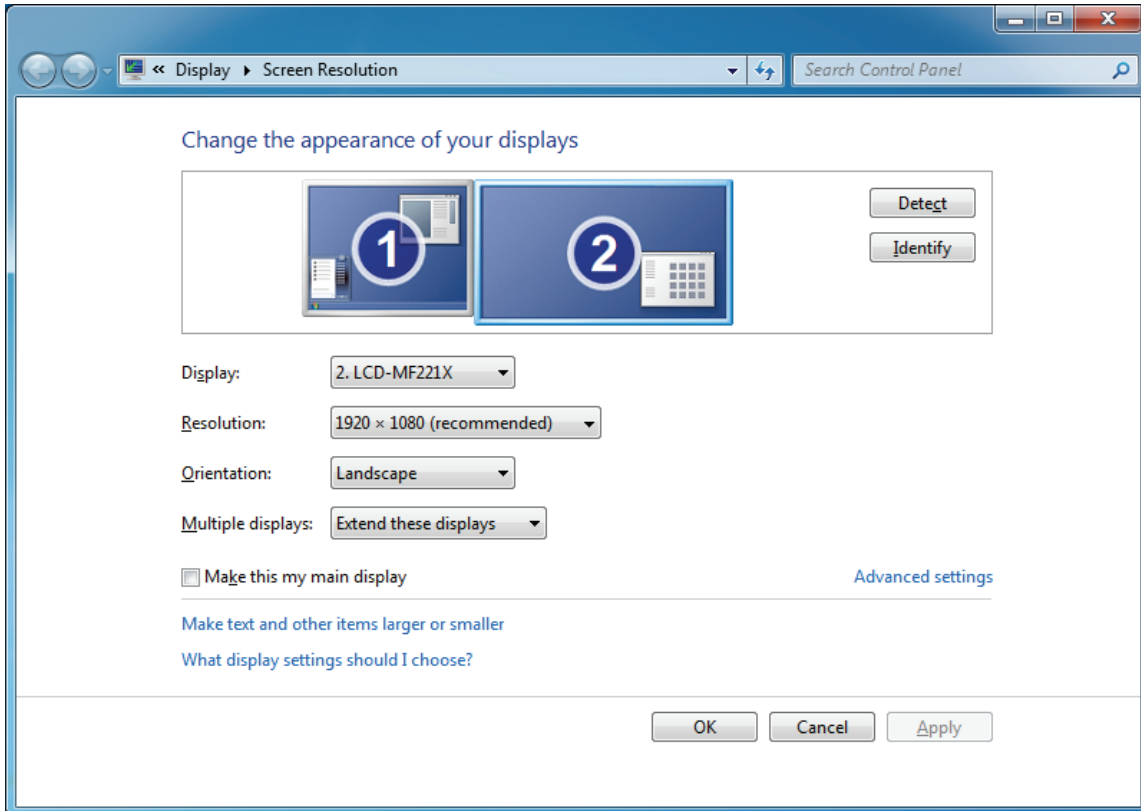


Figure 2

Manual Set-up

Extended mode is the default setting. To set up the adapter to use or restore extended mode, follow these steps:

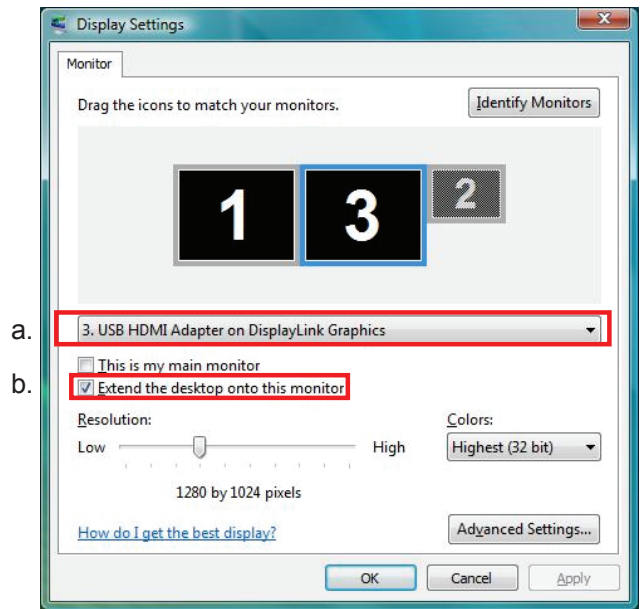
1. Position the mouse anywhere on your computer desktop, right-click and select **Screen Resolution** on Windows® 7, **Personalize > Display Settings** on Windows Vista® or **Properties > Settings** on Windows® XP.
2. In the **Display** drop-down menu, select the option with the string “**DisplayLink Graphics Adapter**”.
3. Check the **Multiple Displays> Extend these displays** on Windows® 7, **Extend the desktop onto this monitor box** on Windows Vista® or **Extend my Windows desktop onto this monitor box** on Windows® XP.

4. Drag the icons in the window at the top of the screen to match the physical arrangement of your primary monitor and secondary monitor.

The secondary monitor connected to the adapter may be identified as either “2” or “3”, depending on your computer, although there may not be a total of 3 screens connected.

5. Click **OK** to close the settings screen.

Once the setting is done, to use your extended desktop, simply drag and drop your open windows over to your second monitor. However, note that some applications may not support display on the extended desktop.



Cursor disappeared?

If you're in extended mode but the secondary monitor is not connected, the desktop still pans to the secondary monitor and it's possible that your cursor has moved to the extended desktop so that you cannot find it on the primary display. To solve the problem in such a case, connect the secondary monitor to the adapter first to restore the cursor.

Video and DVD Playback in Extended Mode

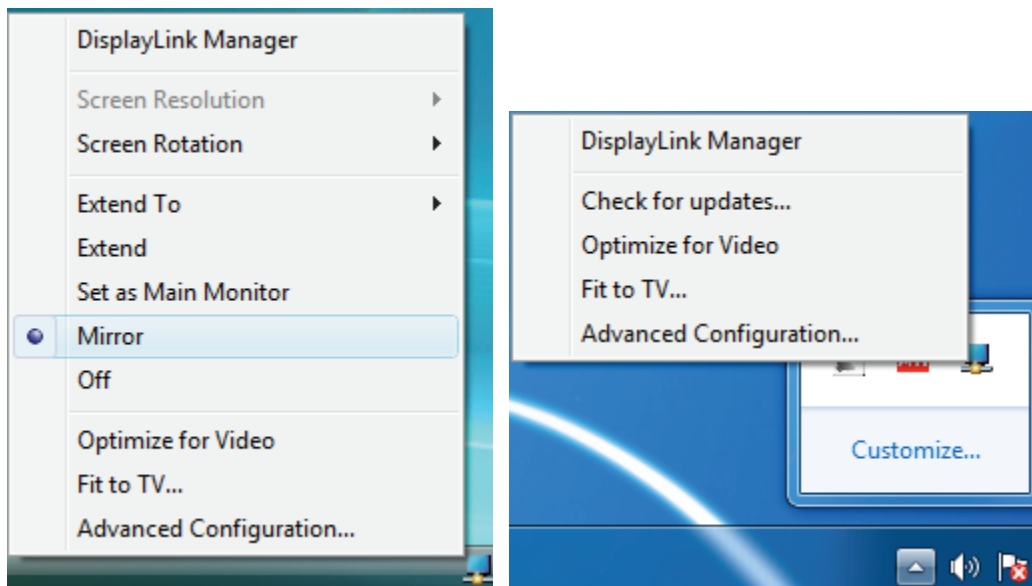
On Windows Vista with extended mode, it's suggested that you run video or DVD playback programs on your primary monitor instead of the secondary monitor to ensure the playback performance.

Mirror Your Windows Desktop

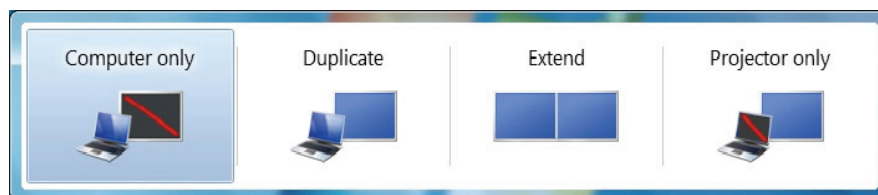
This mode is referred to as “mirror” or “clone” mode. In this mode, the monitor attached to the USB to HDMI® Adapter duplicates what is on the primary display.

Quick Set-up

Click on the **DisplayLink Device** icon and select **Mirror** to configure the setting. On Windows® 7, the **DisplayLink Device** icon will be hidden. Please click the **arrow sign** and right click the **DisplayLink Device** icon to select **Advanced**. Or, position the mouse anywhere on your computer desktop, right-click and select **Screen Resolution**.



It is possible to use **Windows Key+P** to display a menu (and cycle through it) on Windows® 7 to allow: Disconnect Projector, Duplicate, Extend, Projector Only.



Manual Set-up

In mirror mode, the adapter will automatically select the settings (screen resolution, colour quality and refresh rate) for the secondary monitor, but you can manually adjust the settings as required. However, the settings of the secondary monitor are limited by that of the primary monitor. For example, even though your secondary monitor supports a resolution of up to 1920x1080, you can only configure it to use 1280x1024 if the primary monitor only supports a resolution of up to 1280x1024.

Set as Primary Monitor

To make the secondary monitor the primary display:

1. Position the mouse anywhere on your computer desktop, right-click and select **Screen Resolution** on Windows® 7, **Personalize > Display Settings** on Windows Vista® or **Properties > Settings** on Windows® XP.
2. In the **Display** drop-down menu, select the option with the string “**DisplayLink Graphics Adapter**”.
3. Check the **This is my main monitor** box on Windows® 7/ Windows Vista® or **Use this device as the primary monitor** box on Window® XP.
On some PCs and laptops it is necessary to disable the main display (i.e. uncheck the **Extend the desktop onto this monitor** or **Extend my Windows desktop onto this monitor** box for the main display) as part of the same settings change.
4. Click **OK** to close the settings screen.

The add-on monitor stays primary if the PC enters hibernate or suspend mode or is rebooted. If the add-on monitor is unplugged, the main display becomes primary again.

The software supports the modes listed below.

Colour Depth Resolution	Name	Refresh rates available at 16-bit colour quality	Refresh rates available at 32-bit colour quality
640x480	VGA	60 72 75 85	60 72 75 85
800x600	SVGA	56 60 72 75 85	56 60 72 75 85
1024x768	XGA	60 70 75 85	60 70 75 85
1280x720	720p	60	60
1280x768	WXGA+	60 75 85	60 75 85
1280x800	WXGA	60	60
1280x1024	SXGA	60 75 85	60 75
1366x768	WXGA+	60	60
1400x1050	SXGA+	60 75 85	60 75 85
1600x1200	UXGA	60	60
1680x1050	WSXGA+	60	60
1920x1080	1080p	60	60

**Note that interlaced modes and reduced blanking modes are not supported.*

If cloning the primary display, the video component will try to use the preferred monitor mode. In some cases, this may not be the most appropriate mode for the cloned desktop. It is recommended that the primary display resolution be changed to closer match the default resolution of the secondary monitor.

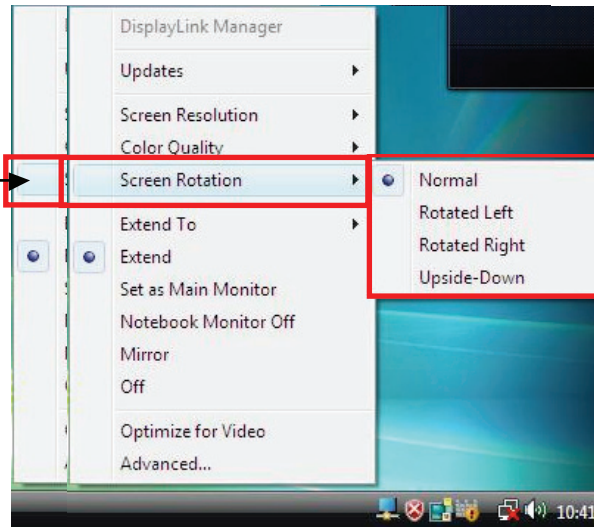
Configuring the Components

To configure the three components (resolution and refresh rate) of a screen mode, follow these steps:

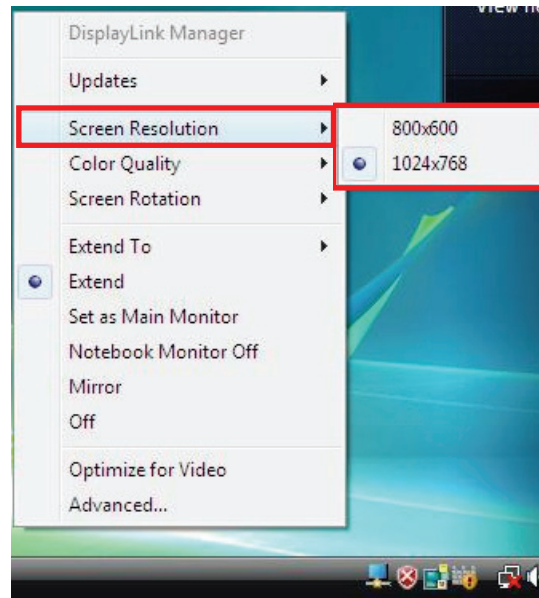
Quick Set-up

Click on the **DisplayLink Device** icon and select **Screen Rotation**; **Screen Resolution** to configure the settings.

Screen Rotation: There are four options for screen rotation: Normal, Rotated Left, Rotated Right and Upside-Down.

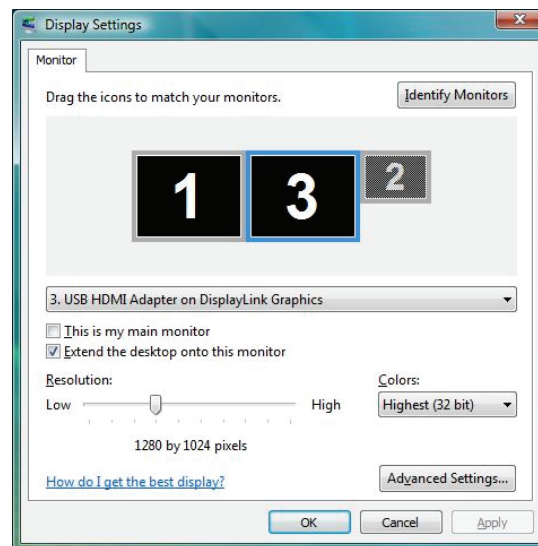
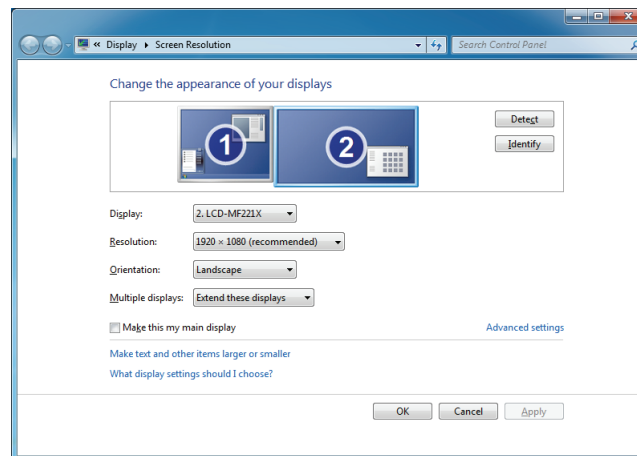


Screen Resolution: The resolution will depend on your computer settings, resolution supported by the monitor, etc.



Manual Set-up

1. Position the mouse anywhere on your computer desktop, right-click and select Screen Resolution on Windows® 7, **Personalize > Display Settings** on Windows Vista® or **Properties > Settings** on Windows® XP.
2. In the drop-down menu, select the option ends with **DisplayLink Graphics Adapter**.
3. To change the screen resolution or select those options on the screen, be sure to select one of the supported resolutions and colour quality numbers from the table on page 18. For a secondary monitor, you can also select any resolution or colour quality supported by that monitor.



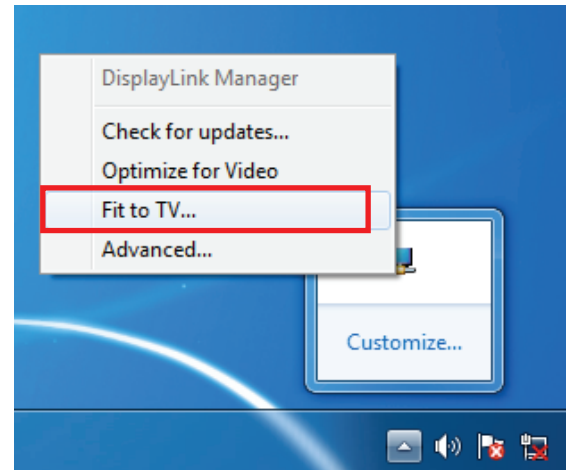
4. To change the refresh rate, click **Advanced...** and then click **Monitor**.
5. Select a refresh rate from the **Screen** refresh rate drop-down list and then click **Apply**.
6. Click **OK** to close the settings screen.

Fit to TV Function

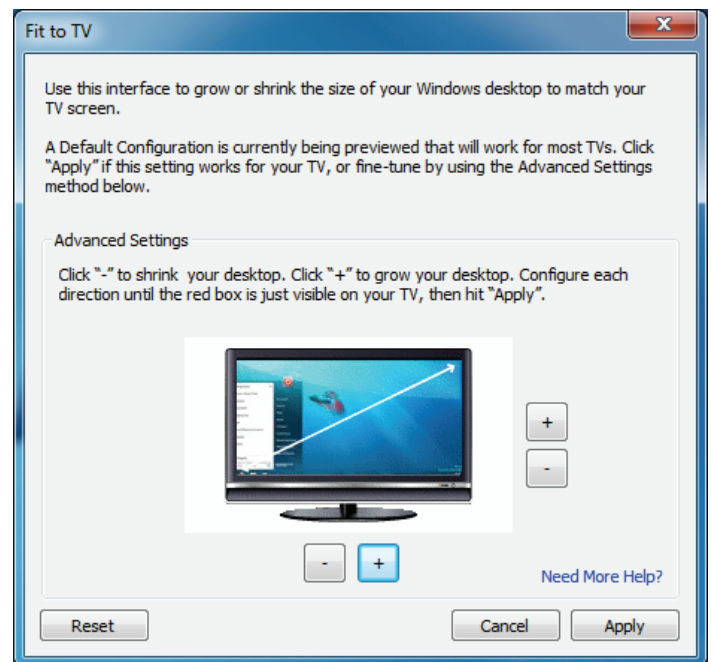
The “Fit to TV” function is for HDMI® TV connections. A new user interface option allows the correction of overscan on TVs when using a USB to HDMI® adapter. The “Fit to TV” function allows a user to change the size of their Windows desktop to allow the entire desktop to be viewed.

Setting

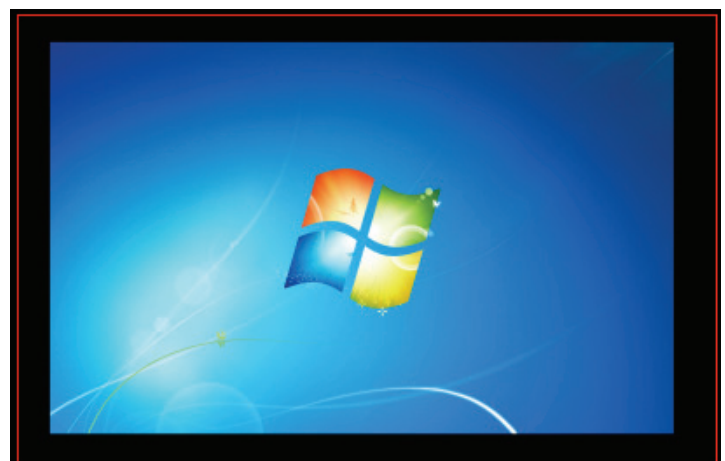
1. Click on the DisplayLink Device icon and select “Fit to TV” to enable this function.



2. The following interface appears:



3. The red border shows the size of the new Windows desktop.



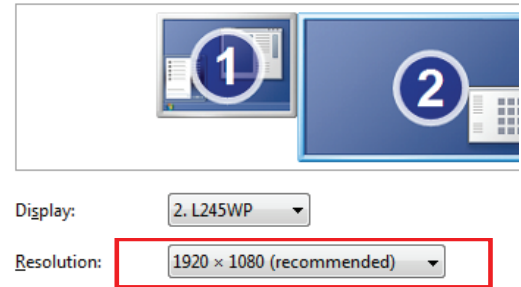
-
4. Use the “+” and “-” controls on the Fit to TV menu to change the size of the red border until it fits on the TV screen.

Note: Finer configuration of the size of the border can be achieved by holding down the CTRL key and clicking “+” and “-”.

Before:

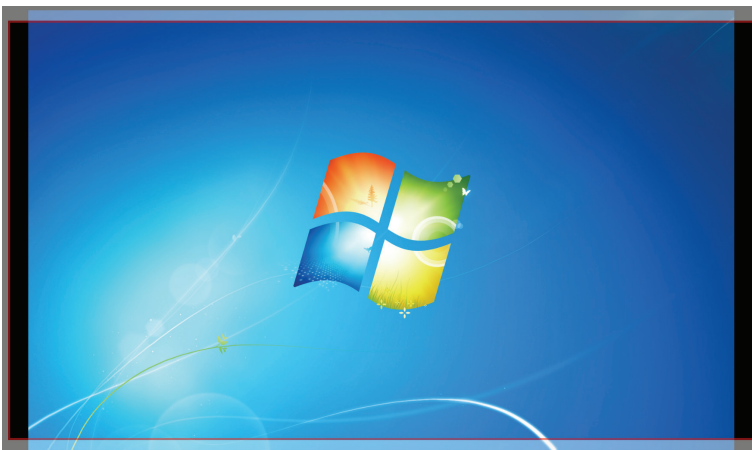


Change the appearance of your displays

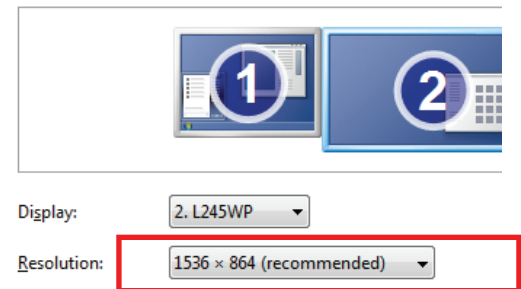


5. Once the red border is at the edges of the TV screen, click “Apply” to resize the Windows desktop.

After:



Change the appearance of your displays



Note: The Fit to TV function only works in extend mode and does not support rotated modes.

Standby and Hibernate, Shut Down and Restart

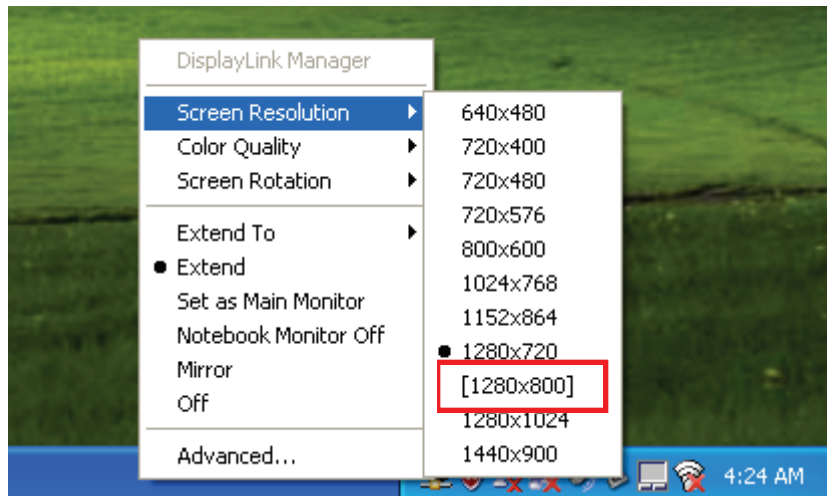
When the adapter is connected to a computer and an external monitor, if the computer goes into standby or hibernate mode, the external monitor display goes blank.

When the computer returns to an active state, the external monitor display keeps the same settings it had before the computer went into standby or hibernate mode. However, if the secondary monitor was set for extended mode, windows that were previously on the external monitor will not move back to that secondary monitor. Also, if the secondary monitor is in extended mode and the computer requires a login after standby or hibernate mode, the login screen appears on the primary computer monitor, not the external monitor.

If the computer is shut down, restarted and logged in again the secondary monitor returns to the same mode as it was before shutdown.

Inferred Modes

Some modes in the DisplayLink menu are shown with square brackets [] around them.



This occurs when connecting a monitor with a preferred mode higher than the maximum supported resolution of the DisplayLink device.

In this case, the preferred resolution of the monitor cannot be supported. However, we add lower resolutions of the same aspect ratio to be tried with the monitor. Modes in square brackets [] imply that these are modes not reported by the monitor, but have been made available by the DisplayLink software for you to try.

As these are inferred modes from the preferred mode of the monitor, they are not guaranteed to work with the display.

Disconnecting the Adapter

If the adapter is unplugged from the computer, the secondary monitor goes blank. All windows and icons move to the primary screen.

On reconnection of the adapter, the adapter returns to the same mode as it was before disconnection. However, windows and icons that were previously on the screen will not be moved back.

Using Dual Adapters

Up to two adapters can be simultaneously attached to one computer. To use two adapters:

1. Install the driver as described in the “2. Installation” section and connect the first adapter to your computer.
2. Then connect the second adapter to your computer. The system will automatically complete the installation.

While two adapters are connected to a computer, in most cases both adapters support extended and mirror modes. The only exception is on Windows Vista XDDM mode as described below.

Limitation for dual adapters on Windows® Vista/7 in XDDM mode: In this mode one extended screen and one mirrored screen are supported. Only the first connected adapter can be configured to use extended mode; the second adapter is forced to use mirror mode. When you bring out the Windows display settings dialog box, you will find that only one **DisplayLink Graphics Adapter** (representing your first attached adapter) is configurable.



Note: XDDM refers to Windows® XP Driver Mode. It is a video card driver mode used in some legacy computers that run the new generation Vista OS. It does not support the Windows Aero interface.

On Mac

Managing Multiple Displays

When attaching a display that the software has not seen before, the display will default to being extended to the right of the main display.

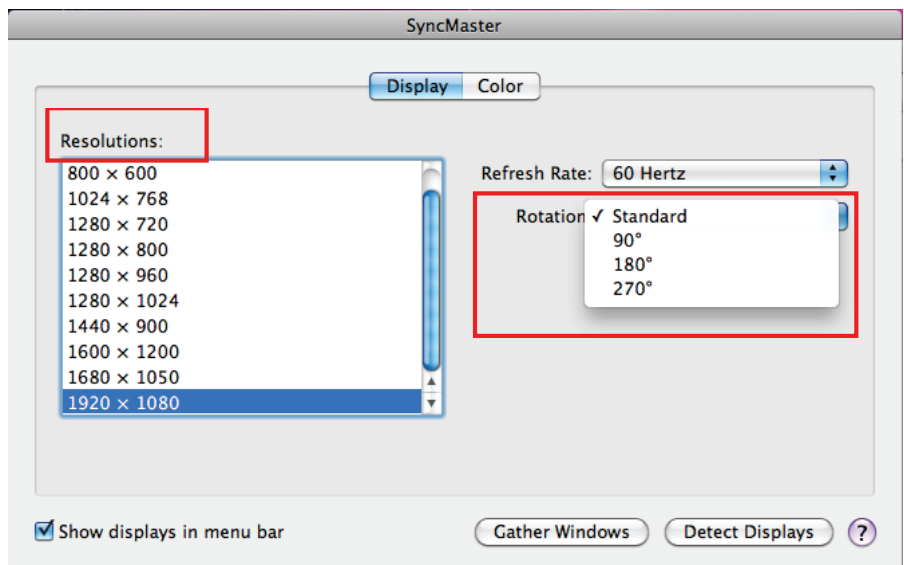
To configure the settings for each of your attached displays, select “Displays” from the “System Preferences” Menu. This will open a “Display Preferences” window on each of your attached displays allowing you to configure each display as required.

It is possible to use the “Gather Windows” button to bring all the “Display Preferences” Windows on to the main display.

Setting the Display Resolutions and Rotation

To change the display’s resolution, select an available resolution from the Display Preferences windows of the display you wish to change. The resolutions available depend on both the DisplayLink enabled product and the capabilities of the connected display.

If you wish to rotate your display, you can configure the orientation using the “Rotate” dropdown. Select the appropriate angle of rotation to match your display’s set up.



Each time the user rotates, any settings made to the mode, resolution, frequency or depth are remembered the next time the user switches back to that angle of rotation

Setting the Position of Displays

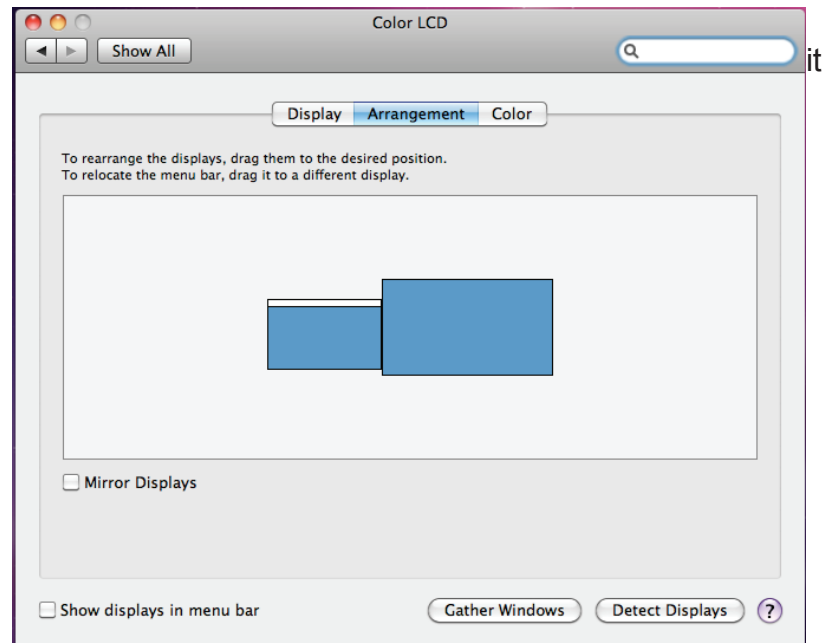
If your computer is connected to more than two displays, you can specify that some are mirrored displays and others show the extended desktop.

A mirrored display shows the same content as the main display whereas an extended display will be an extension to your existing desktop.

You can arrange your displays so that they match the physical layout of your displays by selecting the “Arrangement” pane within Display Preferences. This ensures that you can easily navigate between all connected displays.

Display Positions

To move the position of a display, click and hold the display you wish to move then drag to the desired position. The display will be highlighted with a red border while you are moving the display to its new position.

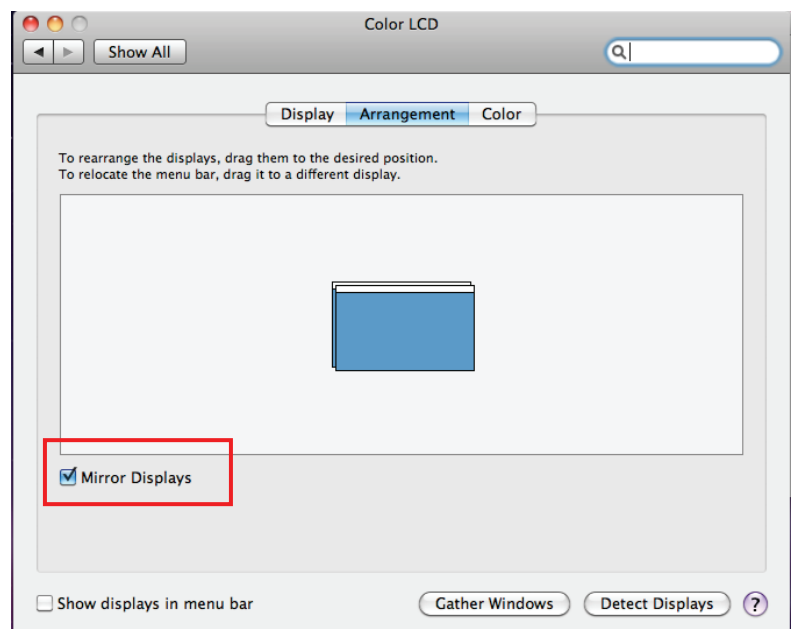


Setting the Display to Mirror/Extend Mode

When in Mirror mode, additional displays will display what is being shown on the primary display. Checking the “Mirror Display” on the “Arrangement” panel enables this feature.

To extend connected displays, make sure that the “Mirror Display” on the “Arrangement” panel is unchecked.

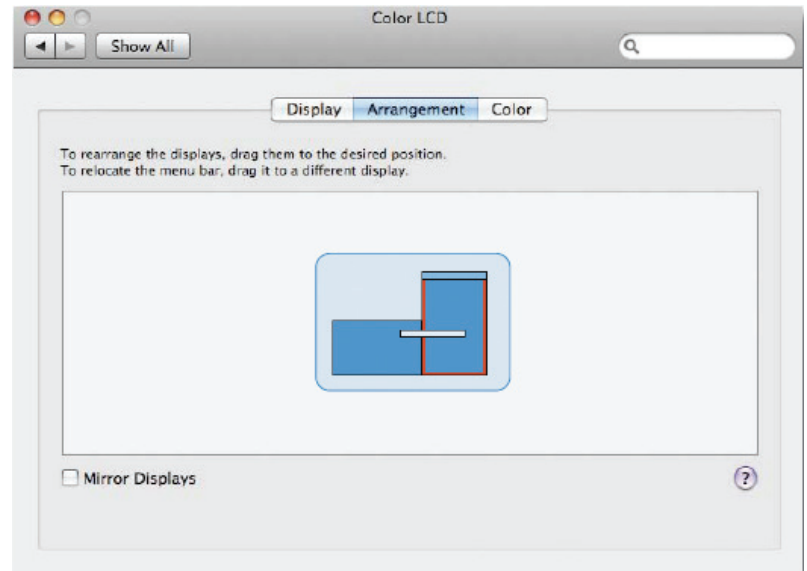
To work with both extended and mirrored displays, turn off mirroring then in the Arrangement pane press and hold “cmd” and “alt” and drag and drop the display you wish to mirror over the primary display.



Changing the Main Display

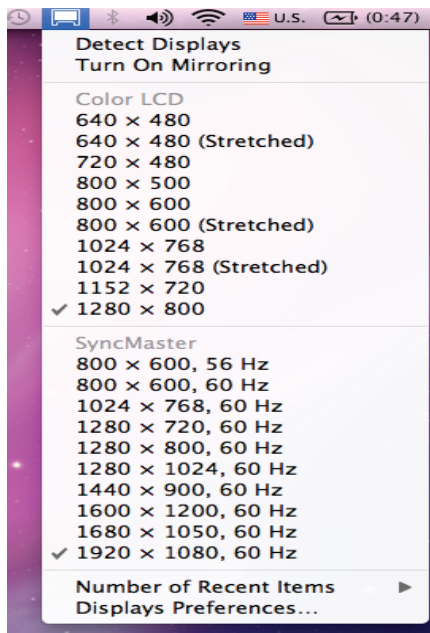
You can change which is the main display by moving the Menu Bar between displays. Changing the main display affects where new windows appear and the position of the Dock.

The “Menu Bar” can be moved so that it is shown on an alternative display. Clicking the white menu bar and dragging it to the desired display will perform this action.



Configuring the Display from the Menu Bar

You can also configure displays by clicking the display icon in the menu bar.

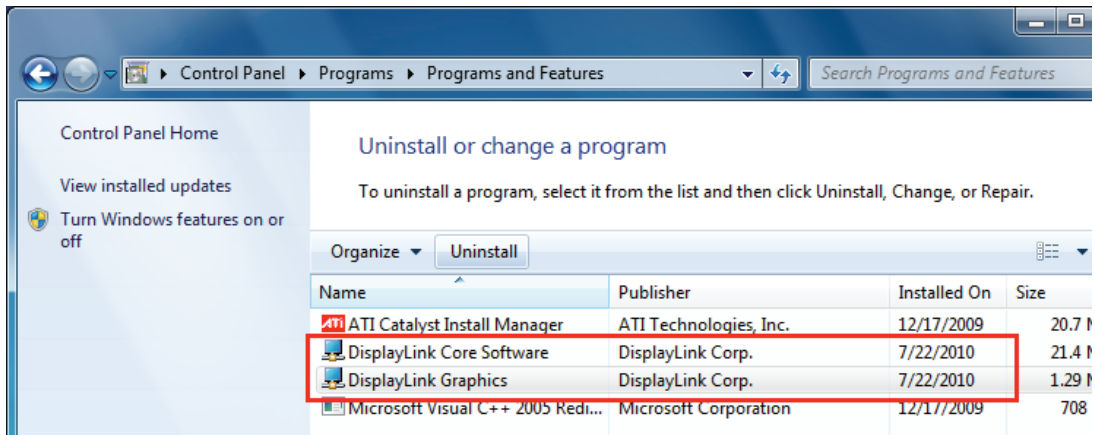


Verifying the Driver Installation

On Windows

To verify your USB display adapter driver installation, please launch **Device Manager** by the steps below:

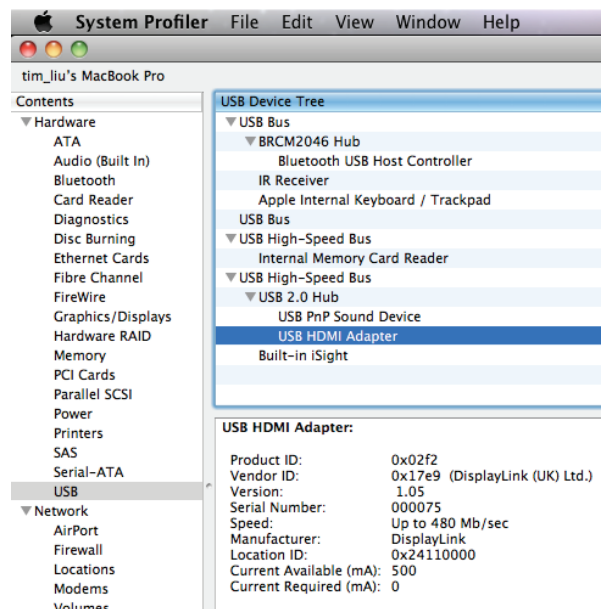
Open the **Control Panel** and double-click **Uninstall a Program** on Windows® 7, **Programs and Features** on Windows Vista®, and **Add or Remove Programs** on Windows® XP.



A string similar to **DisplayLink Core Software** and **DisplayLink Graphics** should be displayed. If there is a question or exclamation mark next to that item, then the driver is not properly installed. Please delete the item, unplug the adapter and repeat the installation steps.

On Mac

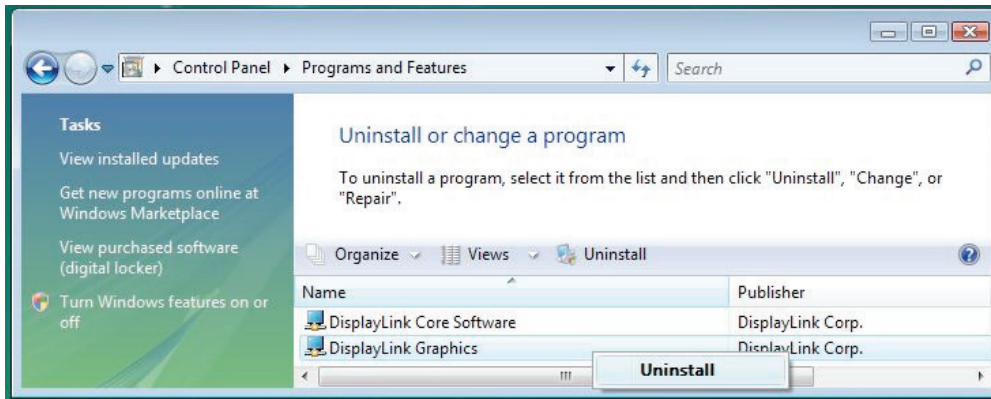
On **Mac OS® X** you can open **GO > Utilities > System Profile > Hardware > USB >** to verify if your **USB HDMI Adapter** is properly installed.



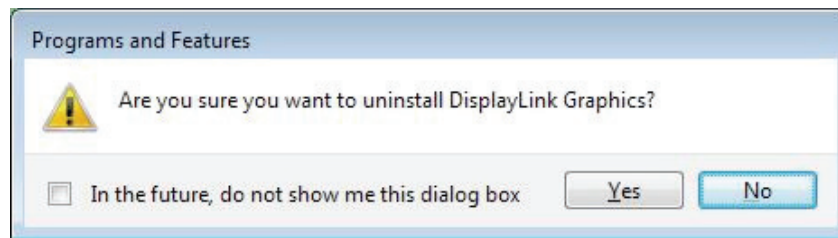
Uninstall the Adapter and Driver

If for any reason you want to uninstall the video adapter and its driver, please take these steps:

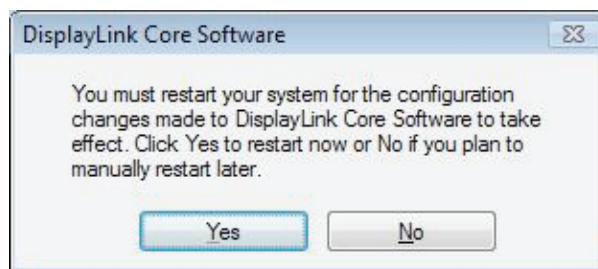
1. Open the **Control Panel** and double-click **Uninstall a Program** on Windows® 7, **Programs and Features** on Windows Vista®, and **Add or Remove Programs** on Windows® XP.
2. Select **DisplayLink Graphics** or **DisplayLink Core Software** and click **Uninstall** or **Remove**.



3. Click **Yes** to confirm the removal. During the removal process a couple of DOS windows will pop up.



4. Click **Yes** to restart your computer and then you can unplug the adapter.



4. Troubleshooting

Q1: The display on the secondary monitor is blank.

A: If the monitor power LED is green (in most cases), wait a moment for the monitor to show the video as sometimes it takes time for the secondary monitor to show the video. You can also reboot your system to try again. Also make sure the computer is not in standby or hibernation mode, which will lead the secondary monitor to be blank.

If the monitor power LED is red (in most cases), check if the connection is properly made. If problem still exists, uninstall the driver, unplug the adapter and reinstall the driver to try again.

Q2: The secondary monitor is flickering.

A: This is usually caused by a low refresh rate. To solve this problem:

- In mirror mode, increase the refresh rate of the main monitor. This will in turn increase the refresh rate of the secondary monitor.
- In extended mode, increase the refresh rate of the secondary monitor.

Q3: When I play MPEG file by Windows Media Player on the extended monitor, why does the display becomes abnormal when I switch it to full screen mode?

A: If your system is Windows® XP SP1, we suggest you upgrade it to SP2 to solve this problem.

Q4: When playing the video in full screen mode, the motion is not smooth.

A: Try the following tips to improve the smoothness of the movie playback:

- Reduce the resolution of the display to 640x480 or 800x600.
- Use the adapter in extended mode.
- Terminate any other CPU intensive applications running on the computer.
- If you still have issues playing media content on the adapter, try the following steps:
 - As some media players require DirectX hardware support to correctly operate, try a different media player which requires less DirectX support.
 - Drag the media player to the secondary screen and close the player. Restart the player and it should open on the secondary monitor. Now try playing the media file again.
 - Try reducing the hardware acceleration level of the primary display (NOT the secondary monitor) to levels 1,2 or 3 and restarting the media player. The hardware acceleration can be found by right-clicking on your desktop and click Properties > Settings > Advanced > Troubleshoot. Some players use this setting even when playing on a different display.
 - The video playback may be unusual when the secondary monitor is mirroring the primary display and there is another extended screen connected to the computer. The extended screen must be disabled before the content will be correctly cloned to the secondary monitor.

Q5: In extended mode, the secondary monitor appears to have a black border around the desktop.

A: This happens when the resolution used by the secondary monitor is larger than the resolution used by the primary monitor. To solve this problem, configure the secondary monitor to use the same resolution as the primary monitor.

5. Specifications

Host Interface	USB 2.0
Video Interface	HDMI®
Connectors	Video output: HDMI® 19-pin female connector Host upstream link: USB Mini-B type female connector
Connectivity	Up to 6 adapters on a computer
RAM	8M x 16 DDR Synchronous DRAM (SDRAM)
Power Mode	Bus-powered
Power Consumption	350 mA
Power	Power Button: To turn on or off power Power LED: To show power status
Operation System Support	Windows® XP Home or Professional (Including Table edition) SP2 or SP3, Windows Vista® SP1 or SP2 (32-bit or 64-bit), Windows® 7 (32-bit or 64-bit) and all Intel-based Macs. (Including Snow Leopard 10.6.2, Leopard 10.5.8, Tiger 10.4.11).
Supported Modes	Extended Desktop (Default), Mirrored Desktop, Primary Display

5. Specifications

Resolutions, Refresh rate and colour depth	Colour Depth	Name	Refresh rates available at 16- bit colour quality	Refresh rates available at 32-bit colour quality
	Resolution			
	640x480	VGA	60 72 75 85	60 72 75 85
	800x600	SVGA	56 60 72 75 85	56 60 72 75 85
	1024x768	XGA	60 70 75 85	60 70 75 85
	1280x720	720p	60	60
	1280x768	WXGA+	60 75 85	60 75 85
	1280x800	WXGA	60	60
	1280x1024	SXGA	60 75 85	60 75
	1366x768	WXGA+	60	60
	1400x1050	SXGA+	60 75 85	60 75 85
	1600x1200	UXGA	60	60
	1680x1050	WSXGA+	60	60
	1920x1080	1080p	60	60

**Note that interlaced modes and reduced blanking modes are not supported.*

Dimensions	96.5 (L) x 80 (W) x18.5 (H) mm
USB Cable	<ul style="list-style-type: none"> • Type: USB A -Type Male to 5-pin Mini USB B-Type Male • Length: 1 m
Operating temperature	10°C ~ 40°C
Storage temperature	-10°C ~ 80°C

* Specifications are subject to change without notice

6. FCC/Warranty

The FCC Wants You To Know

This equipment has been tested and found to comply with the limits for a Class B digital device, pursuant to Part 15 of the FCC Rules. These limits are designed to provide reasonable protection against harmful interference in a residential installation.

This equipment generates, uses and can radiate radio frequency energy and, if not installed and used in accordance with the instructions, may cause harmful interference to radio communications. However, there is no guarantee that interference will not occur in a particular installation.

If this equipment does cause harmful interference to radio or television reception, which can be determined by turning the equipment off and on, the user is encouraged to try to correct the interference by one or more of the following measures:

- Reorient or relocate the receiving antenna.
- Increase the separation between the equipment and receiver.
- Connect the equipment into an outlet on a circuit different from that to which the receiver is connected.
- Consult the dealer or an experienced radio/TV technician for additional suggestions.

Any changes or modifications not expressly approved by the party responsible for compliance could void the user's authority to operate the equipment. Where shielded interface cables have been provided with the product or specified additional components or accessories elsewhere defined to be used with the installation of the product, they must be used in order to ensure compliance with FCC regulation.


CAN ICES-3(B).

THE SOURCE - WARRANTY



The Source warrants that this product will be free from defects in materials and workmanship for a period of (1) year from the date of purchase. Within this period, simply take the product and your proof of purchase to any The Source store or participating dealer and the product will be replaced (where available) without charge. Any product which has been subject to misuse or accidental damage is excluded from this warranty.

This warranty is only applicable to a product purchased through The Source company-owned stores or participating dealers in Canada where the warranty is included with the product. While this warranty does not confer any legal rights other than those set out above, you may have additional statutory rights which will vary under the laws of the various countries, states, provinces and other governmental entities in which The Source operates. This warranty is subject to all statutory rights you may have in Canada.

 Imported by:
The Source,
Barrie, Ontario, Canada, L4M 4W5

Manufactured in China

For product support please visit
www.thesource.ca

© 2013 The Source
All rights reserved.



Please Recycle