

3116021

USER'S MANUAL



TV Soundbar with Wireless Subwoofer

F L U I D™
INC.

Warnings

1. Do not place this system in high-temperature or moist surroundings and keep away from water and shock.
2. Do not open the casing in order to avoid electric shock or any other accidents. Refer to professional technicians for servicing.
3. Power off immediately if water or liquids are accidentally spilt into the system.

Important Safety Instructions

- Read these instructions. All the safety and operating instructions should be read before this product is operated.
- Keep these instructions. The safety and operating instructions should be retained for future reference.
- Heed all warnings. All warnings on the appliance and in the operating instructions should be adhered to.
- Follow all instructions. All operating and use instructions should be followed.
- Do not use this apparatus near water. The appliance should not be used near water or moisture, for example, in a wet basement or near a swimming pool.
- Clean only with dry cloth.
- Do not block any ventilation openings. Install in accordance with the manufacturer's instructions.
- Do not install near any heat sources such as radiators, heat registers, stoves, or other apparatus (including amplifiers) that produce heat.
- Do not defeat the safety purpose of the polarized or grounding plug. A polarized plug has two blades with one wider than the other. A grounding plug has two blades and a third grounding prong. The wide blade or the third prong is provided for your safety. If the provided plug does not fit into your outlet, consult an electrician for replacement of the obsolete outlet.
- Protect the power cord from being walked on or pinched particularly at the plugs, convenience receptacles, and at the point where they exit from the apparatus.
- Only use attachments/accessories specified by the manufacturer.
- Use only with the cart, stand, tripod, bracket, or table specified by the manufacturer, or sold with the apparatus. When a cart or rack is used, use caution when moving the cart/apparatus combination to avoid injury from tip-over.
- Unplug the apparatus during lightning storms or when unused for long periods of time.
- Refer all servicing to qualified personnel. Servicing is required when the apparatus has been damaged in any way, such as power supply cord or plug is damaged, liquid has been spilled or objects have fallen into the apparatus has been exposed to rain or moisture, does not operate normally, or has been dropped.
- CAUTION: These servicing instructions are for use by qualified service personnel only. To reduce the risk of electric shock, do not perform any servicing other than contained in the operating instructions unless qualified to do so.
- CAUTION — To prevent electric shock hazard, replace grille.
- Do not place this equipment in a confined space such as a bookcase or similar unit. Keep the unit in a well-ventilated environment. Do not impede ventilation by covering the ventilation opening with items such as newspapers, tablecloths, curtains, etc.



- **WARNING:** To reduce the risk of fire or electric shock, do not expose this apparatus to rain or moisture. The apparatus shall not be exposed to dripping or splashing and that objects filled with liquids, such as vases, shall not be placed on the apparatus.
- **WARNING:** The main power plug is used as a disconnect device, the disconnect device shall remain readily operable.
- **WARNING:** Refer to the information on the exterior bottom enclosure for electrical and safety information before installing or operating the apparatus.
- **WARNING:** To reduce the risk of electric shock, do not remove cover (or back) as there are no user-serviceable parts inside. Refer servicing to qualified personnel.
- **WARNING:** Terminals marked with the “⚡” symbol may be of sufficient magnitude to constitute a risk of electric shock. The external wiring connected to the terminals requires installation by a qualified person or the use of ready-made leads or cords.
- **WARNING:** To prevent injury, this apparatus must be securely attached to the floor/wall in accordance with the installation instructions.
- **WARNING:** The batteries shall not be exposed to excessive heat such as sunshine, fire or the like.
- When not in use or during repositioning, take care of the power cord by tying up with a cable tie. Keep free from sharp edges that may cause abrasion to the power cord. When in use, check to ensure the power cord has not been damaged. If any damage is found, have a qualified service person replace the power cord specified by the manufacturer or with a replacement with the same characteristics as the original one.



- This lightning flash with arrowhead symbol within an equilateral triangle is intended to alert the user to the presence of non-insulated “dangerous voltage” within the product’s enclosure that may be of sufficient magnitude to constitute a risk of electric shock.
- The exclamation point within an equilateral triangle is intended to alert the user to the presence of important operating and maintenance instructions in the literature accompanying the appliance.
- This equipment is a Class II or double insulated electrical appliance. It does not require a grounding connection.

Features

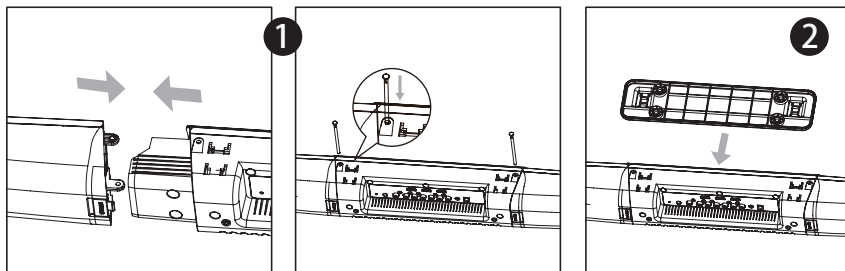
- Soundbar with wireless subwoofer
- Wooden subwoofer with Power On/Off
- Heavy duty metal grill on soundbar
- LED display on front panel
- Front panel control for Power, Volume+/-, Source, and back panel control for left and right speakers on soundbar
- Remote control with Standby, Mute, Main Volume +/-, Subwoofer Volume+/-, Source and EQ

Package Contents

1. Subwoofer — 1
2. Middle bar speaker — 1
3. Left and right bar speakers — 1
4. Table stand — 1
5. Adapter — 1
6. Remote control — 1
7. Fixed axle — 2
8. Wall bracket — 1
9. Rubber stopper — 2
(for attaching bolts to wall)
10. Bolt size: TAH 4x35 mm — 2
11. Bolt size: PMH 3x8 mm — 2
12. 1/8" jack to RCA cable — 1
13. RCA cable — 1

Connecting the Soundbar

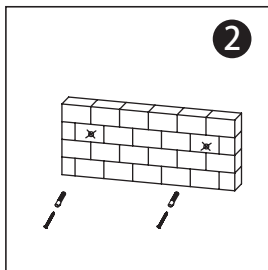
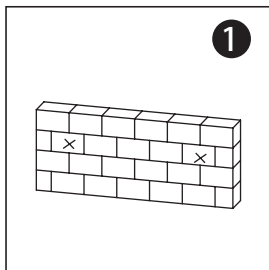
The soundbar is packaged unassembled.



1. Attach the Left and Right speaker bars to the middle bar speaker.
2. Slide the table stand onto the bottom of the soundbar.

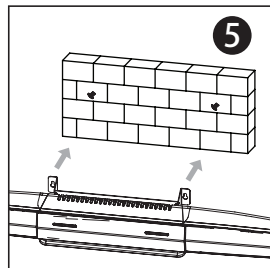
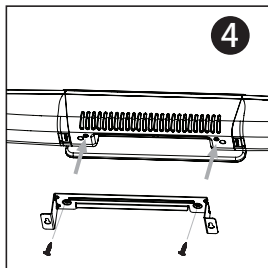
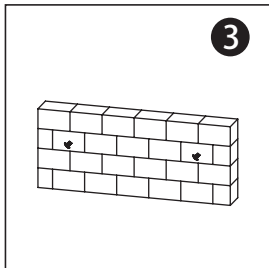
Wall Bracket Installation Instructions

To mount on a wall:



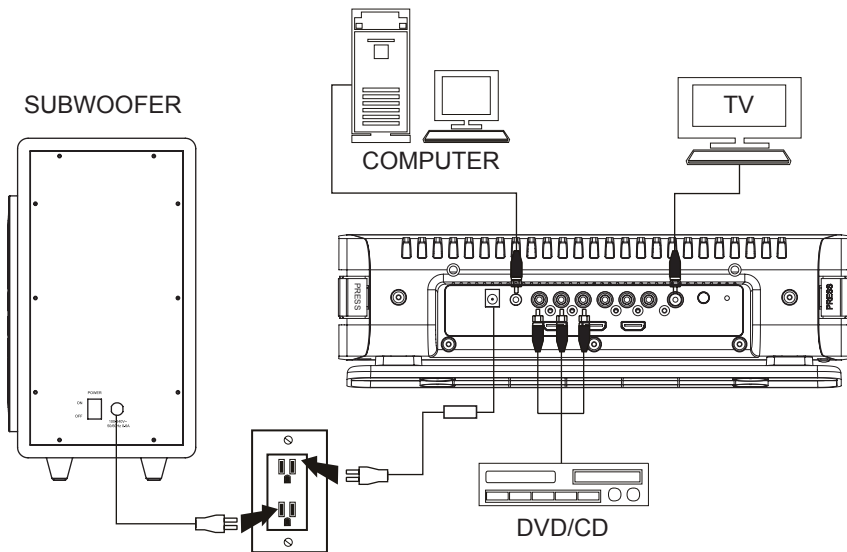
1. Using a stud finder, locate and mark the stud to mount the wall bracket. Place the bracket against the wall and level it. Mark the two locations on the wall where the bracket will be secured and place the bracket aside.
2. Drill two holes on the marked locations. Insert the two rubber stoppers into each of the holes.

Wall Bracket Installation Instructions

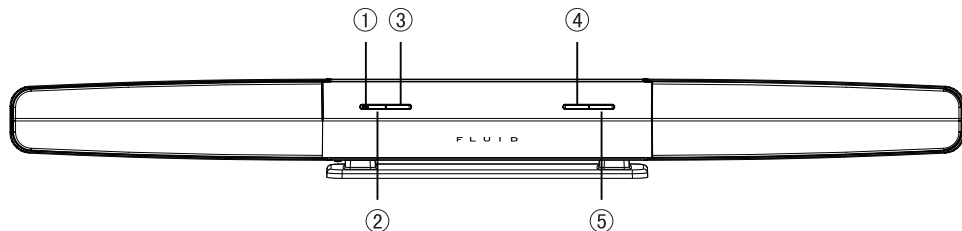


3. Insert the two bolts size TAH 4x35 mm into the rubber stopper.
4. Attach the bracket to the soundbar using the two bolts size PMH 3x8 mm
5. Mount the soundbar onto the bracket using the wall bolts.

Connecting External Devices to the Soundbar

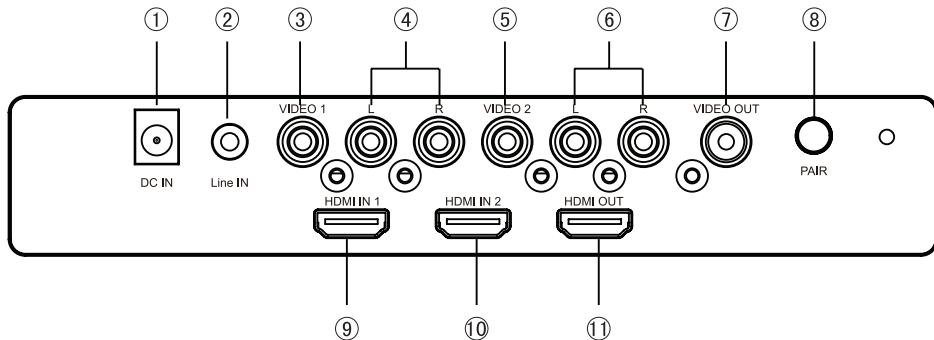


Front Control Panel



- | | |
|------------------------|-----------------------|
| 1. LED power indicator | 4. Volume down button |
| 2. Power button | 5. Volume up button |
| 3. Source button | |

Back Control Panel



- | | |
|----------------------------|---|
| 1. DC IN: 18V 3A | 7. VIDEO OUT |
| 2. Line IN | 8. PAIR: Wireless Pair button |
| 3. AV1:VIDEO1 input | 9. HDMI IN1: High-resolution HDMI1 input |
| 4. AV1 SOUND L and R input | 10. HDMI IN2: High-resolution HDMI2 input |
| 5. AV2:VIDEO2 input | 11. HDMI OUT: High-resolution HDMI output |
| 6. AV2 SOUND L and R input | |

Instructions

1. The power indicator lights up after the power supply plug is connected.
2. To turn the unit on, press the power button, the LED display lights up.
To turn the unit off, press the power button again, the unit will go into Standby mode.
3. Press the Source button and select a source option; HDMI 1 > HDMI 2 > AUXIN > AV1 > AV2.
4. HDMI indicates the options HDMI 1 > HDMI 2; AUX indicates the options AUX IN > AV1 > AV2.
5. Select the desired EQ options by pressing EQ on the remote.
6. Press Mute on the remote control to disable the audio sound.
Press MUTE/VOL/SW/SOURCE/EQ button to turn off mute and resume audio.

To pair the soundbar to the subwoofer:

1. When powered on for the first time, the “PAIR” blue LED light on the soundbar and subwoofer will flash.
2. To initiate pairing, press the “PAIR” button on the back panel of the soundbar until the blue LED light flashes rapidly, then press the “PAIR” button on the front panel of the subwoofer for 3-5 seconds. Or press both “PAIR” buttons on the soundbar and the subwoofer at the same time for 3-5 seconds.
3. The blue LED light will stop flashing once pairing has been completed.
4. Once pairing has been completed once, there is no need to manually initiate pairing again.

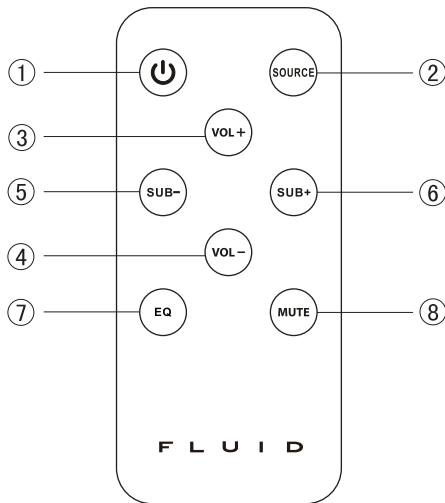
Remote Control

1. Standby
2. Source options
3. Volume up
4. Volume down
5. Subwoofer down
6. Subwoofer up
7. EQ options
8. Mute

Note: The Li-ion battery in the remote control is packed with a battery insulation strip. Remove this strip before use.

Specifications

- | | |
|-------------------------|-----------------|
| 1. Output power: | 20 W x 2 + 40 W |
| 2. Frequency response : | 20 Hz - 20 kHz |
| 3. Separation : | ≥35 dB |
| 4. S/N : | ≥75 dB |
| 5. Output impedance : | 8 Ω |



Industry Canada Notice

This device complies with RSS-210 of Industry Canada. Operation is subject to the following two conditions:

- (1) this device may not cause interference, and
- (2) this device must accept any interference, including interference that may cause undesired operation of the device.

This digital apparatus does not exceed the Class B limits for radio noise emissions from digital apparatus set out in the Radio Interference Regulations of Industry Canada.

RSS-102 Statement:

This device complies with Industry Canada radiation exposure limits set forth for an uncontrolled environment.

IC Number: 255A-3116021



THE SOURCE WARRANTY

The Source warrants that this product will be free from defects in materials and workmanship for a period of one (1) year from the date of purchase. Within this period, simply take the product and your proof of purchase to any The Source store or dealer and the product will be repaired without charge for parts and labour. The Source reserves the right to charge for transportation. Any product which has been subject to misuse or accidental damage is excluded from this warranty.

This warranty is only applicable to a product purchased through The Source company owned stores and dealers and to a product that is presented for repair in a country where The Source offers the product for sale. While this warranty does not confer any legal rights other than those set out above, you may have additional statutory rights which will vary under the laws of the various countries, states, province and other governmental entities in which The Source operates. This warranty is subject to all statutory rights you may have in the country of purchase.



Please Recycle



Imported by:
The Source,
Barrie, Ontario, Canada, L4M 4W5

Manufactured in China

For product support please visit
www.thesource.ca

Limited Warranty

© 2012 The Source.
All Rights Reserved.

